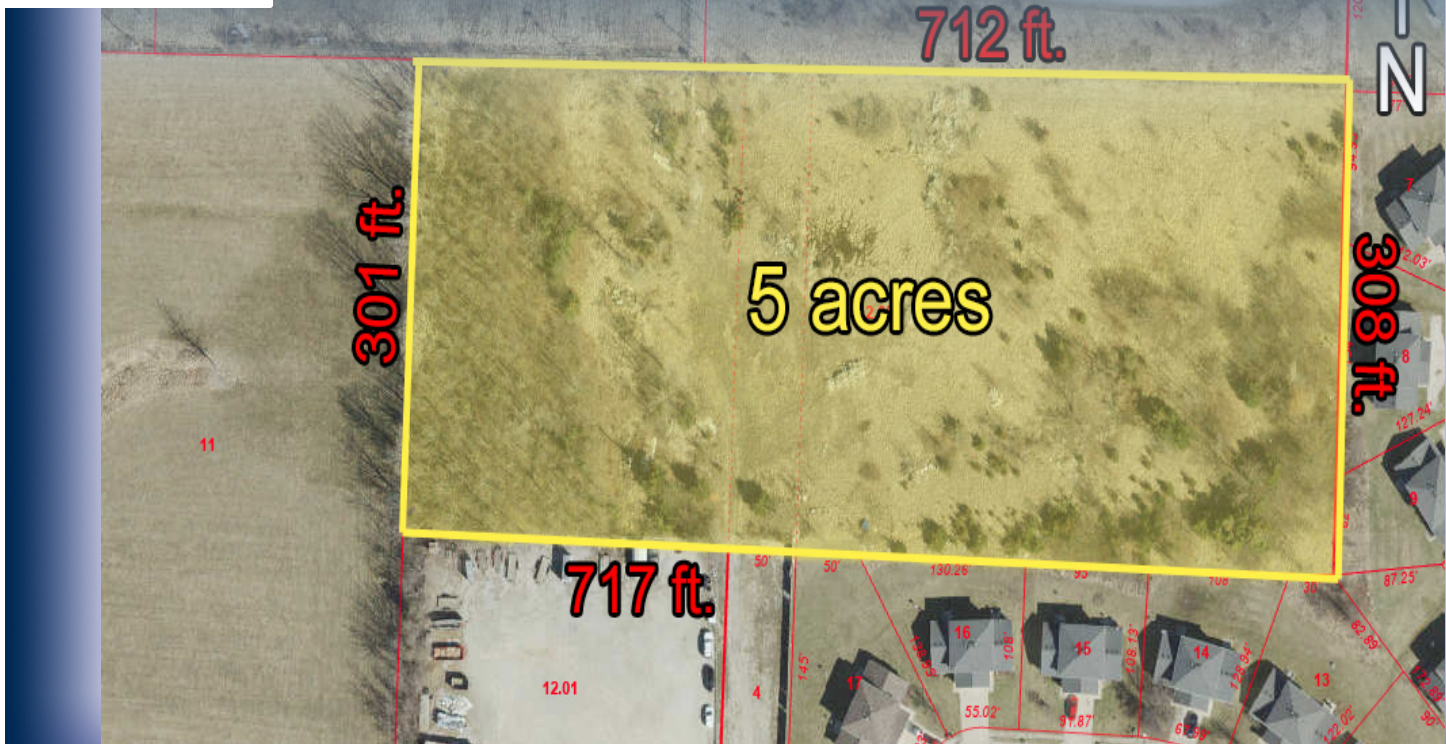


**1300 BLOCK OF SMILEY LN.**



**ADDRESS** 1300 Block of Smiley Ln.  
Columbia, MO

**PROPERTY TYPE** Land

**SALE PRICE** \$205,000

**LAND** 5.00 acres

**ZONING** M-L

**DETAILS**

- Approximately 5 acres of undeveloped land located in Boone County and near City Limits of Columbia that is zoned M-L (light industrial) County of Boone
- Dedicated access to the property off Smiley Lane
- Adjacent to successful businesses at Boone Industrial Park
- This zoning and price should allow for single or multiple building development to appeal to a project developer or end user
- Recently cleared of underbrush to reveal favorable topography for business development

Paul Land, *SIOR* PaulLand@PlazaCommercialRealty.com  
Mike Grellner, *SIOR* MikeGrellner@PlazaCommercialRealty.com

2501 Bernadette Drive  
Columbia, MO 65203

