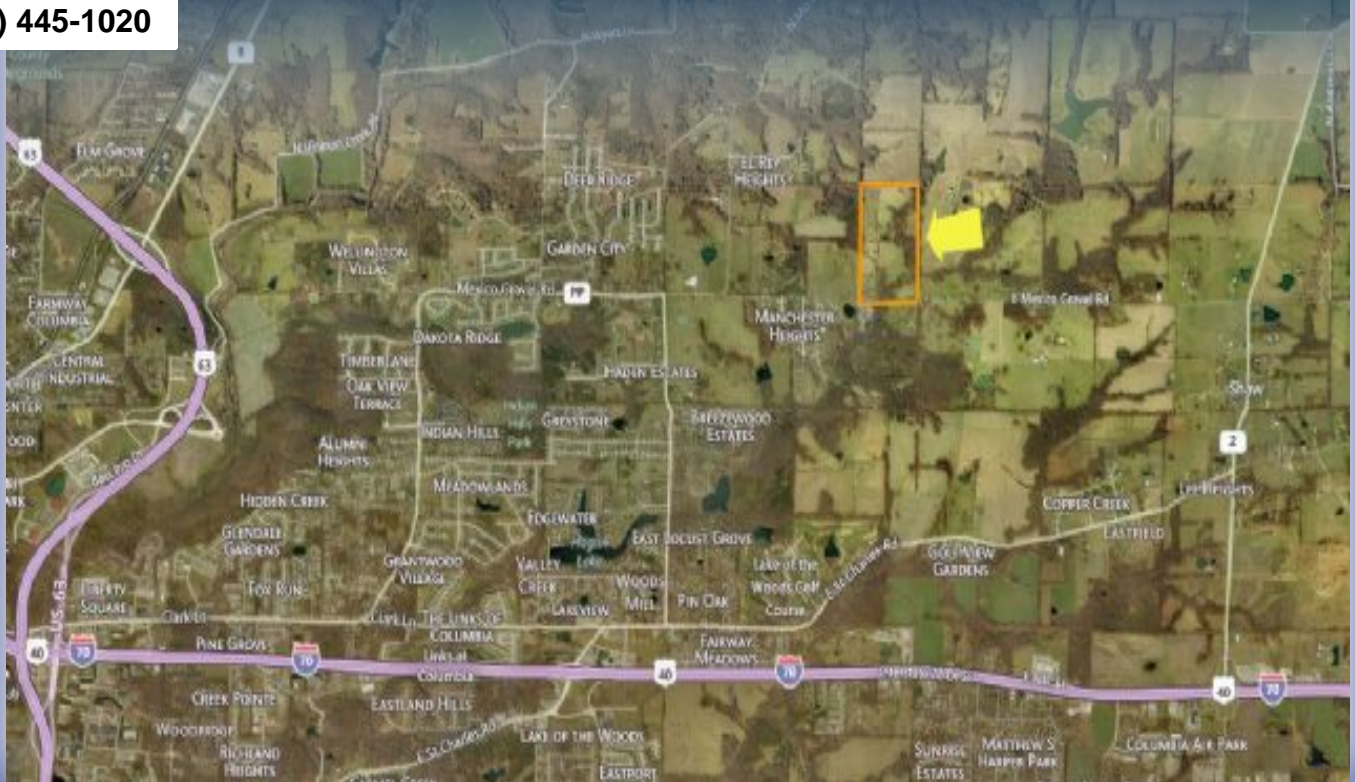


**E. MEXICO GRAVEL RD.**



<b>ADDRESS</b>	E. Mexico Gravel Rd. Columbia, MO
<b>PROPERTY TYPE</b>	Land
<b>SALE PRICE</b>	\$419,000
<b>LAND</b>	79.60 acres

**DETAILS**

- Agricultural/recreation ground located in growing area of Northeast Columbia
- Short distance from Lake of the Woods & Interstate 70 exit, and Battle High School
- Has a mixture of open/tillable ground, timber, and creek (Hominy Branch)
- 1,300 lineal feet of road frontage
- Excellent farm and recreation property, with development potential

Paul Land, *SIOR* PaulLand@PlazaCommercialRealty.com  
Mike Grellner, *SIOR* MikeGrellner@PlazaCommercialRealty.com

2501 Bernadette Drive  
Columbia, MO 65203

