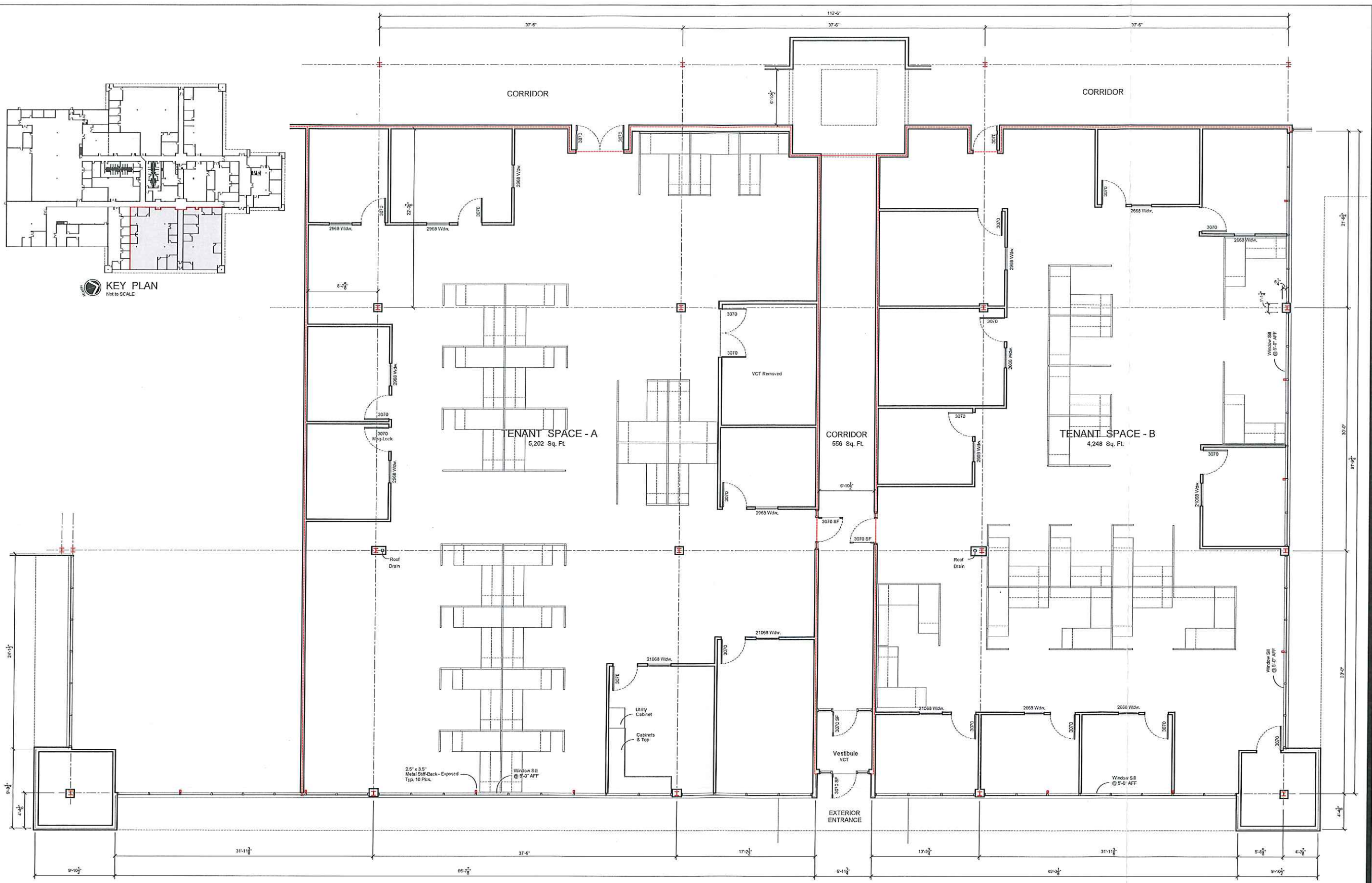




KEY PLAN
Not to Scale



FLOOR PLAN
SCALE 3/16" = 1'-0"
5,202 Sq. Ft. - Tenant SPACE - A
4,248 Sq. Ft. - Tenant SPACE - B
556 Sq. Ft. - Corridor
10,006 Sq. Ft. - TOTAL LEASE SPACE



THESE DRAWINGS REPRESENT A BUILDER'S SET OF DRAWINGS AND ARE TO BE USED AS A GUIDE TO THE DESIGN AND CONSTRUCTION PROCESS. THIS SET OF DOCUMENTS IS NOT TO BE USED FOR ANY OTHER PURPOSES. ALL WORK SHALL BE UNDER THE DIRECT SUPERVISION OF A REGISTERED AND LICENSED DESIGN PROFESSIONAL.

1313 Riley Industrial Dr.
Moberly, MO 65270
660-263-1312
www.orscheln.com



DO NOT SCALE THIS DRAWING
SOME DEVIATION FROM SCALE
MAY OCCUR FROM REPRODUCTION.
DRAWINGS ARE THE PROPERTY OF
ORSCHELN PROPERTIES CO.
AND MAY NOT BE COPIED OR
USED IN WHOLE OR PART WITHOUT
THE WRITTEN CONSENT OF
ORSCHELN PROPERTIES CO.

ISSUE	ID	DESCRIPTION	DATE
1	ISSUED DATE	07/03/23	

PROJECT

Existing Building Layout for:
**ORSCHELN PROPERTIES
TECH-CENTER BUILDING**
1961 Hirst Drive
Moberly, Randolph County, Missouri 65270

PROJECT NO.
23-017

SHEET TITLE
PARTIAL
FLOOR PLAN

SHEET NUMBER
A-200