

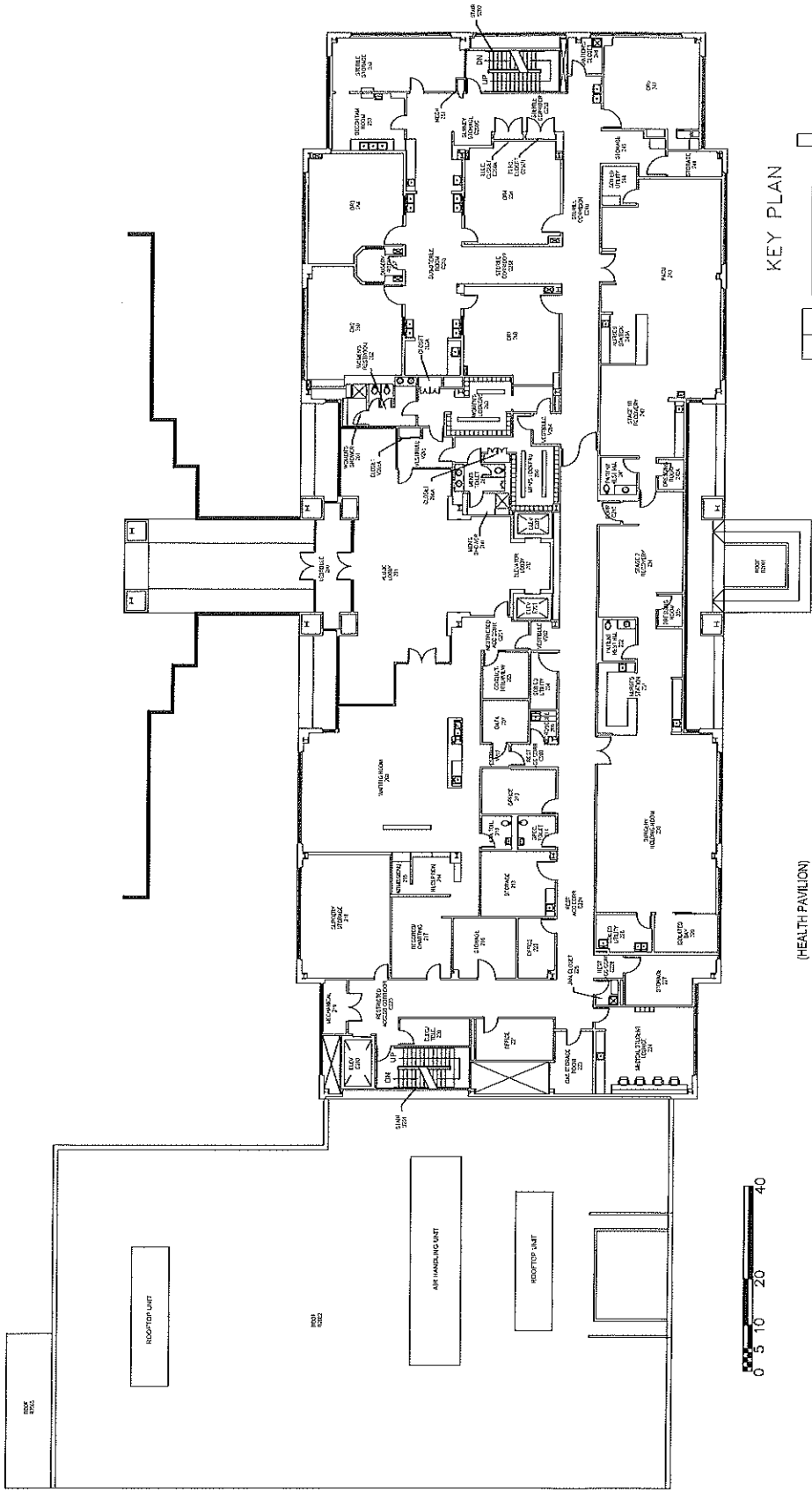
REVISED: 07-18-2022 CLK

LEVEL: FIRST	TOUR DATE: 2019	SCALE: NIS	
BUILDING NO: 45450	SHEET: 1 OF 5	GROSS SQ. FT.: 29,885	

COLUMBIA REGIONAL HEALTH PAVILION

CAMPUS FACILITIES
SPACE PLANNING & MANAGEMENT
(573) 882-4506

KEY PLAN
WOMEN'S & CHILDREN'S HOSPITAL COMPLEX



KEY PLAN

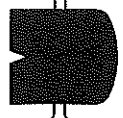
WOMEN'S & CHILDREN'S HOSPITAL COMPLEX

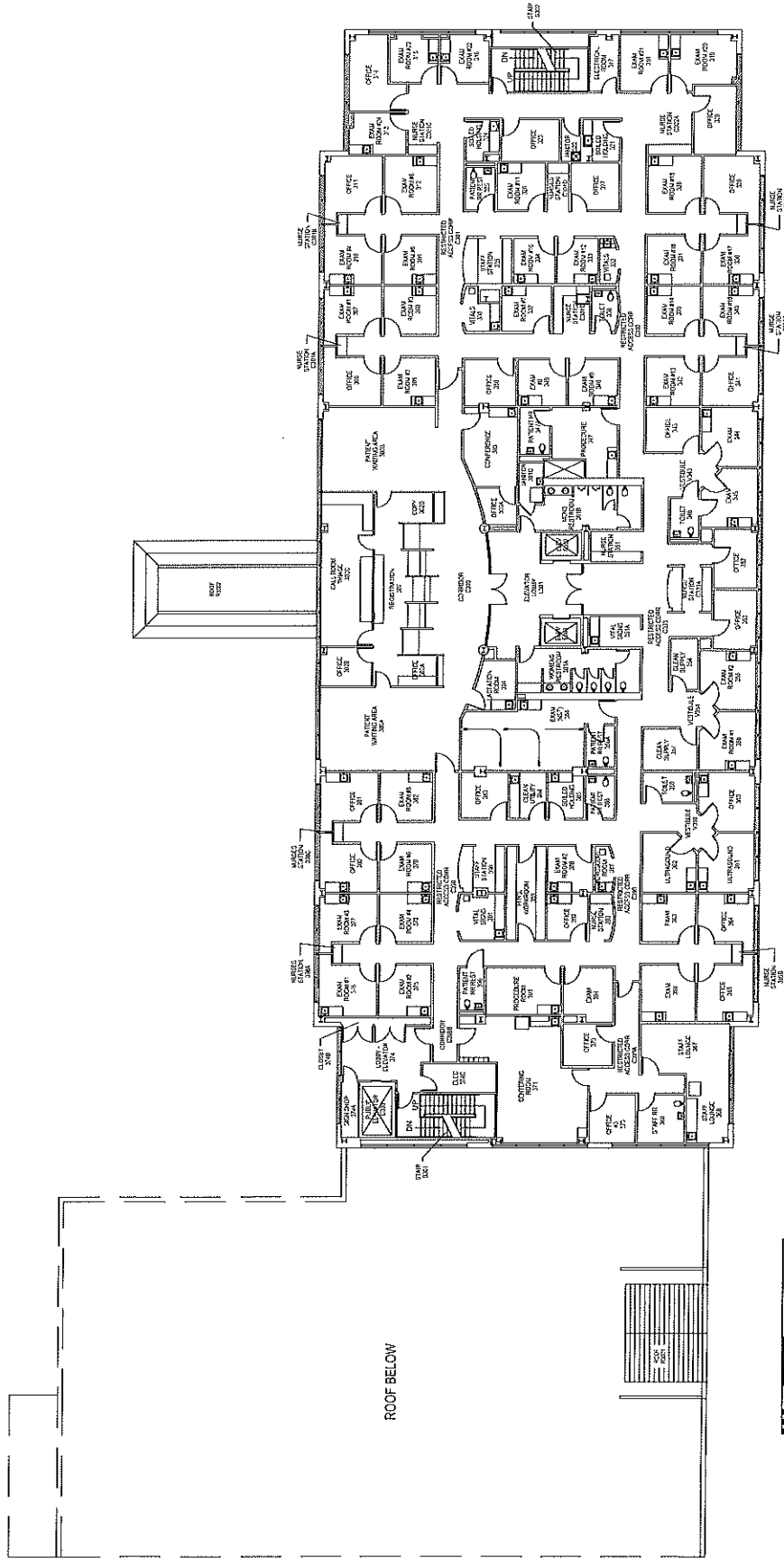
REVISED: 07-18-2022 CLK

LEVEL: SECOND	TOUR DATE: 2019	SCALE: NTS	GROSS SQ. FT.: 20,538	NORTH

COLUMBIA REGIONAL
HEALTH PAVILION

CAMPUS FACILITIES
SPACE PLANNING & MANAGEMENT
(573) 882-4506



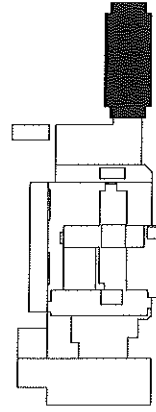


ROOF BELOW



(HEALTH PAVILION)

KEY PLAN



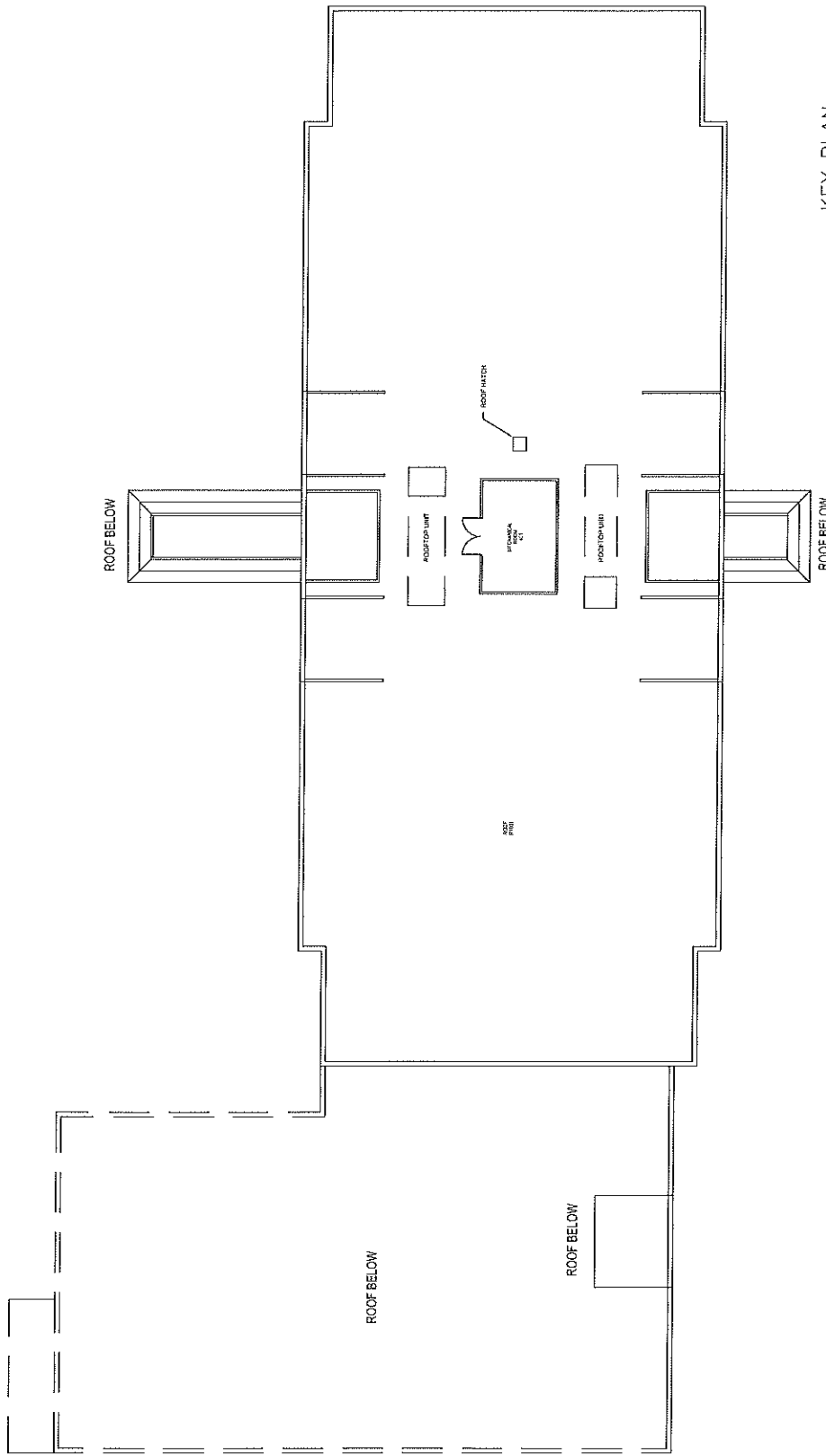
WOMEN'S & CHILDREN'S HOSPITAL COMPLEX

REVISED: 07-18-2022 CLK

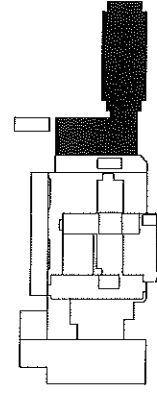
LEVEL: THIRD	TOUR DATE: NTS	SCALE:	NORTH
BUILDING NO: 45450	SHEET: 3 OF 5	GROSS SQ. FT.: 20,660	

COLUMBIA REGIONAL
HEALTH PAVILION

CAMPUS FACILITIES
SPACE PLANNING & MANAGEMENT
(573) 882-4506



KEY PLAN



WOMEN'S & CHILDREN'S HOSPITAL COMPLEX



REVISED: 07-18-2022 CLK

CAMPUS FACILITIES
SPACE PLANNING & MANAGEMENT
(573) 882-4506

COLUMBIA REGIONAL
HEALTH PAVILION

LEVEL: ROOF	TOUR DATE: 2018	SCALE: NTS	GROSS SQ. FT.: 425
BUILDING NO: 45450	SHEET: 4 OF 5		



NORTH